

**PALMETTO ELECTRIC COOPERATIVE, INC.
METER SOCKET SPECIFICATIONS**

- 1) All Meter Sockets to be Ringless.
- 2) All Meter Sockets Must be UL Approved.
- 3) All Latches to be Stainless Steel.
- 4) Enclosure to be 14 gauge, galvanized steel.
- 5) Listed Dimensions are Minimums.

Landis+Gyr is now Talon.

EDITED ON 3/13/2023 RR

100 AMP SINGLE PHASE RESIDENTIAL - COMMERCIAL -TEMPORARY SERVICE

CONT. AMP RATING	SERVICE	CONNECTOR TYPE	W	DIMENSIONS (IN) H	D		HUB	NO. OF TERMINALS	BY PASS	ENCLOSURE MATERIAL
100	OH/UG	#8 – 2/0 Lay-In	8	11	3.3		2”/ Blank	4	NONE	GAL. STEEL
Durham	T-RS101B	#8 – 2/0	11	14	4.375					
Talon (Landis+Gyr)	UAT111-OG	#14 – 2/0	8	11.7	3.6					
Milbank	U7487-RL-TG	#8– 2/0	8	11.5	3.3125					
Milbank	U8435-XL-TG-HSP	# 6- 2/0	8	11.5	3.313					
GE	TSMR015CSGP	#8– 2/0	14.1	31.7	4.8					
GE	TSMR815CSFLFMG	#8 - 2/0	14.1	31.7	4.8					
GE	TSMR415CSCUGP	#8 - 2/0	14.1	31.7	4.8					

200 AMP SINGLE PHASE RESIDENTIAL SERVICE

CONT. AMP RATING	SERVICE	CONNECTOR TYPE	W	DIMENSIONS (IN) H	D		HUB	NO. OF TERMINALS	BY PASS	ENCLOSURE MATERIAL
200	OH/UG	3/8" STUD	11	20	4.5		2"/ Blank	4	NONE	GAL. STEEL
Durham	1001989		12	20	4.5					
Durham	UT-RS220A		13	15.125	4.9					
Milbank	U2986-XL		13	19	4.5					
GE	TSMR020CSGP		14.1	31.7	4.8					
GE	TSMR420CSCUGP		14.1	31.7	4.8					
GE	TSMR820CSFLFMG		14.1	31.7	4.8					
GE	TSMR2020CSCUFMG		14.1	34.4	4.8					
Talon	UAS878-XG UAS818-PGNM		13	14	5.1					

200 AMP SINGLE PHASE COMBINATION METER SOCKET/DISCONNECT FOR RESIDENTIAL SERVICE

COMBINATION METER SOCKET AND 200 AMP DISCONNECT ASSEMBLIES ARE VERY POPULAR AND MAY BE USED FOR MOBILE HOME OR HOUSE APPLICATIONS. THE COMBINATION ASSEMBLY MUST BE RINGLESS.
THE METER SOCKET PORTION OF THIS COMBO UNIT MUST MEET THE SPECIFICATIONS BELOW

CONT. AMP RATING	SERVICE	CONNECTORS SIZE	W	DIMENSIONS (IN) H	D	HUB	NO. OF TERMINALS	BY PASS	ENCLOSURE MATERIAL
200	OH/UG	#6- 350 Lay-In	11	20	4.5	2"/Blank	4	NONE	GAL. STEEL
Square D	RC200SFMG	#6 – 300 Lay-In	13.06	23.03	4.67	2"/Blank	4 or 5	NONE	GAL. STEEL
Square D	RC816F200C	#6 – 300 Lay-In	14.37	35.13	4.67	2"/Blank	4	NONE	GAL. STEEL
GENERAC	RBU200A3	#6 – 350 Lay-In	17.3	42.5	6.3	2"/Blank	4	NONE	GAL. STEEL

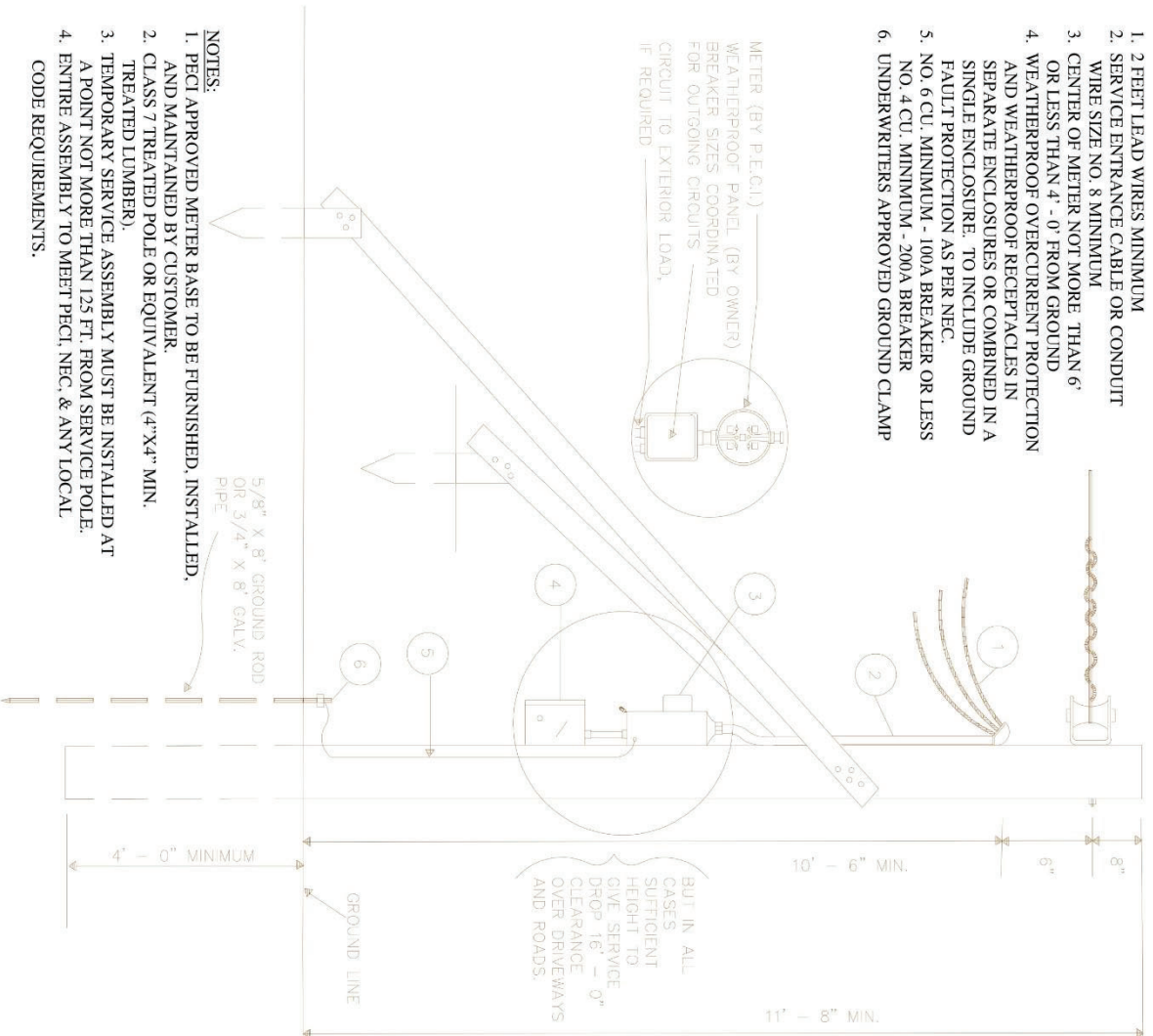
200 AMP SINGLE PHASE COMMERCIAL SERVICE

CONT. AMP RATING	SERVICE	CONNECTOR TYPE	W	DIMENSIONS (IN) H	D	HUB	NO. OF TERMINALS	BY PASS	ENCLOSURE MATERIAL
200	OH/UG	3/8" STUD	11	19	4.8	2"/Blank	4	LEVER BYPASS WITH JAW RELEASE	GAL. STEEL
Durham	H4230C		16	27	5.625				
Talon (Landis+Gyr)	42504-025		13	19	5.1				
Milbank	U9865-RRL		13	28.25	4.875				

TEMPORARY SERVICE ASSEMBLY FROM OVERHEAD DISTRIBUTION

CLASS 7 TREATED POLE OR
EQUIVALENT (4" X 4" MIN.
TREATED TIMBER)

1. 2 FEET LEAD WIRES MINIMUM
2. SERVICE ENTRANCE CABLE OR CONDUIT
WIRE SIZE NO. 8 MINIMUM
3. CENTER OF METER NOT MORE THAN 6'
OR LESS THAN 4'-0" FROM GROUND
4. WEATHERPROOF OVERCURRENT PROTECTION
AND WEATHERPROOF RECEPTACLES IN
SEPARATE ENCLOSURES OR COMBINED IN A
SINGLE ENCLOSURE. TO INCLUDE GROUND
FAULT PROTECTION AS PER NEC.
5. NO. 6 CU. MINIMUM - 100A BREAKER OR LESS
NO. 4 CU. MINIMUM - 200A BREAKER
6. UNDERWRITERS APPROVED GROUND CLAMP



- NOTES:**
1. PEIC APPROVED METER BASE TO BE FURNISHED, INSTALLED,
AND MAINTAINED BY CUSTOMER.
 2. CLASS 7 TREATED POLE OR EQUIVALENT (4"x4" MIN.
TREATED LUMBER).
 3. TEMPORARY SERVICE ASSEMBLY MUST BE INSTALLED AT
A POINT NOT MORE THAN 125 FT. FROM SERVICE POLE.
 4. ENTIRE ASSEMBLY TO MEET PEIC, NEC, & ANY LOCAL
CODE REQUIREMENTS.

DATE: March 5, 1990
APPROVED BY: Wilson D. Saleeby
REV.: February 19, 2014 SHEET 1

MEMO # 5

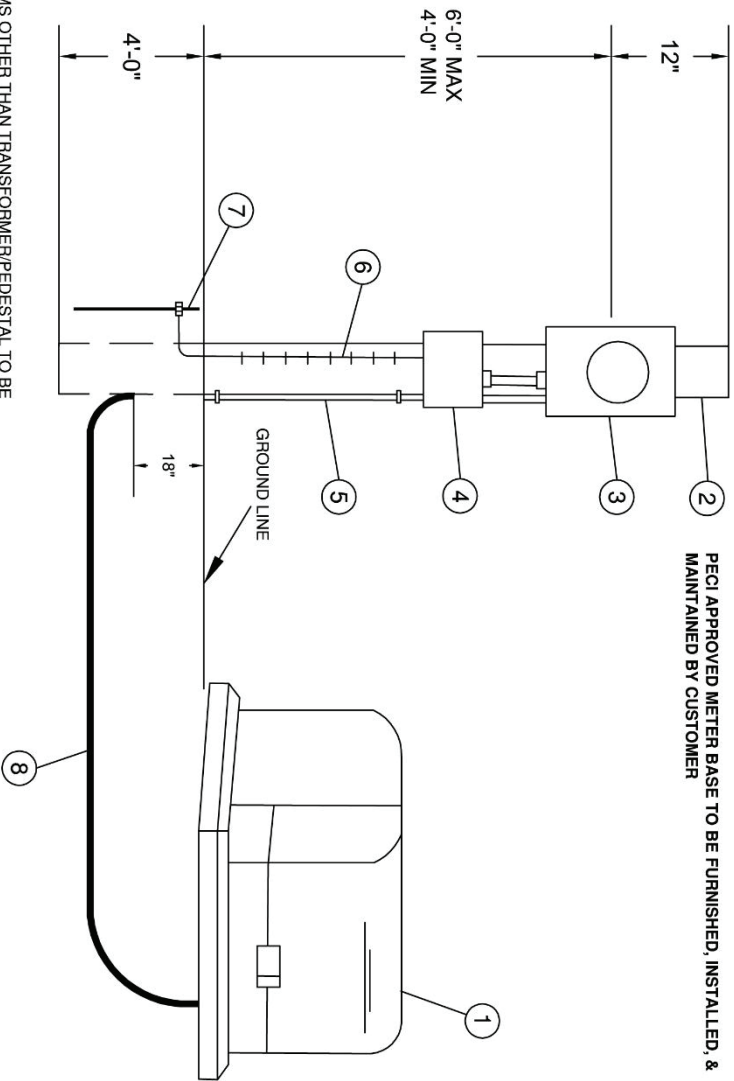
PALMETTO
ELECTRIC COOPERATIVE INC.
A Touchstone EnergySM Partner

TEMPORARY SERVICE INSTALLATION FROM UNDERGROUND DISTRIBUTION

"TYPICAL COMMERCIAL"

ITEM #:

1. PAD MOUNTED TRANSFORMER OR PEDESTAL
2. CLASS 7 TREATED POLE OR EQUIVALENT (4"x4" MIN. TREATED TIMBER)
3. METER BASE (BY OWNER)
4. WEATHERPROOF OVERCURRENT PROTECTION AND WEATHERPROOF RECEPTACLES IN SEPARATE ENCLOSURE OR COMBINED IN A SINGLE ENCLOSURE
5. GALVANIZED IRON OR SCHEDULE 40 PVC CONDUIT AND FITTINGS - MIN SIZE 1-1/4"
6. GROUND WIRE TO BE SECURELY ATTACHED TO STRUCTURE NO. 6 CU. MINIMUM - 100A BREAKER OR LESS
7. 5/8" x 8' GROUND ROD (GALVANIZED OR COPPER CLAD) WITH U.L. APPROVED CLAMP
8. CABLE AND CONDUIT, IF APPLICABLE, PROVIDED AND INSTALLED BY OWNER TO MEET NEC AND/OR LOCAL REQUIREMENTS



NOTES

1. ALL ITEMS OTHER THAN TRANSFORMER/PEDESTAL TO BE FURNISHED, INSTALLED, & MAINTAINED BY CUSTOMER
2. CUSTOMER TO INSTALL POLE NO CLOSER THAN 4 FEET FROM TRANSFORMER PAD OR PEDESTAL
3. WHERE SECONDARY PEDESTALS ARE AVAILABLE, THEY MAY BE USED TO CONNECT THE SERVICE POLE
4. CUSTOMER TO DIG FROM POLE TO APPROXIMATELY 1 FT FROM DOOR SIDE (RIGHT FRONT CORNER) OF TRANSFORMER PAD OR TOWARD HANDHOLE OR PEDESTAL AND PROVIDE 10' OF EXTRA WIRE TO BE INSTALLED & CONNECTED BY PECO PERSONNEL
5. ENTIRE ASSEMBLY TO MEET PECO, NEC, & ANY LOCAL CODE REQUIREMENTS
6. CALL SC811 BEFORE YOU DIG

DATE: July 23, 2014

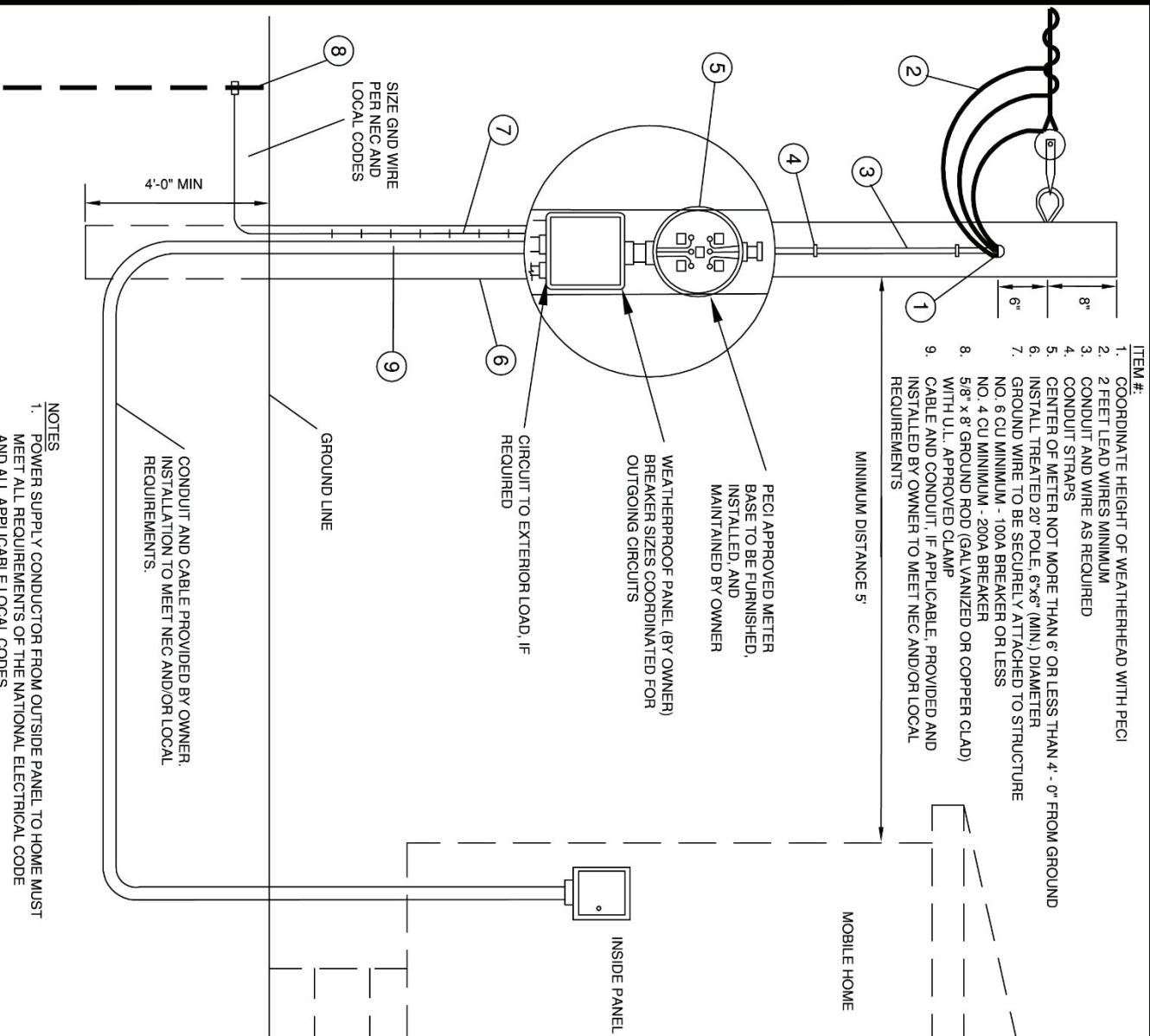
APPROVED BY: Wilson D. Saleeby

REV: SHEET 1 OF 2

MEMO #6



MOBILE HOME METER SERVICE POLE



- ITEM #:
1. COORDINATE HEIGHT OF WEATHERHEAD WITH PECO
 2. FEET LEAD WIRES MINIMUM
 3. CONDUIT AND WIRE AS REQUIRED
 4. CONDUIT STRAPS
 5. CENTER OF METER NOT MORE THAN 6' OR LESS THAN 4' - 0" FROM GROUND
 6. INSTALL TREATED 2" POLE, 6"x6" (MIN.) DIAMETER
 7. GROUND WIRE TO BE SECURELY ATTACHED TO STRUCTURE
 8. NO. 6 CU MINIMUM - 100A BREAKER OR LESS
 9. NO. 4 CU MINIMUM - 200A BREAKER
 10. 5/8" x 8' GROUND ROD (GALVANIZED OR COPPER CLAD) WITH U.L. APPROVED CLAMP
 11. CABLE AND CONDUIT, IF APPLICABLE, PROVIDED AND INSTALLED BY OWNER TO MEET NEC AND/OR LOCAL REQUIREMENTS

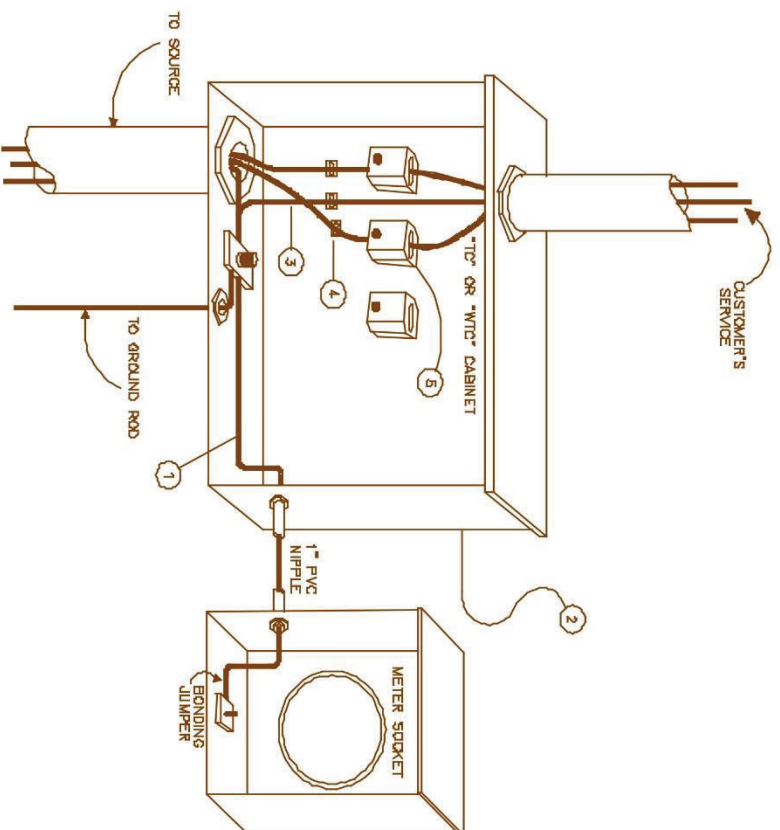
- NOTES
1. POWER SUPPLY CONDUCTOR FROM OUTSIDE PANEL TO HOME MUST MEET ALL REQUIREMENTS OF THE NATIONAL ELECTRICAL CODE AND ALL APPLICABLE LOCAL CODES
 2. ENTIRE ASSEMBLY TO MEET PECO, NEC, AND LOCAL REQUIREMENTS
 3. DRAWING SHOWS TYPICAL METHOD FOR BURIED SERVICE
 4. THIS IS ONLY A GUIDE FOR INSTALLATION
 5. CALL SC811 BEFORE YOU DIG

DATE: March 30, 1998
 APPROVED BY: Wilson D. Sateby
 REV: July 23, 2014 SHEET 1 OF 1

MEMO #7



**RESIDENTIAL
C. T. CABINET**

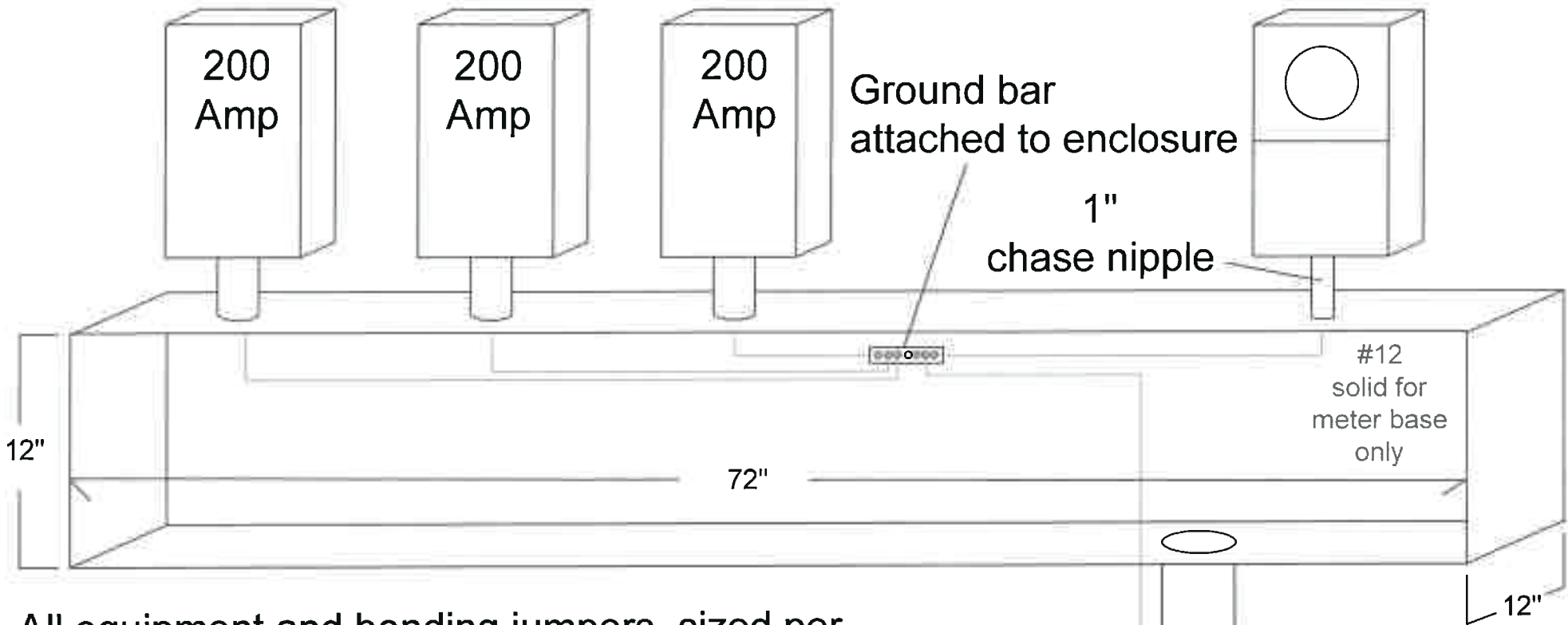


NOTES:

1. All metering cabinets and troughs to be bonded together with minimum #6 copper bonding wire.
2. C. T. Cabinets to be provided by owner/contractor. Minimum C. T. cabinet size is to be 24" x 24" x 12".
3. Both the owners service entrance conductors and the Cooperatives service cables are to be terminated in the cabinet.
4. Owner/contractor is responsible for providing Cooperative approved terminal blocks.
5. C. T.'s and meter socket to be provided by the Cooperative.
6. Entire assembly to meet PECC, NEC, and local code requirements.

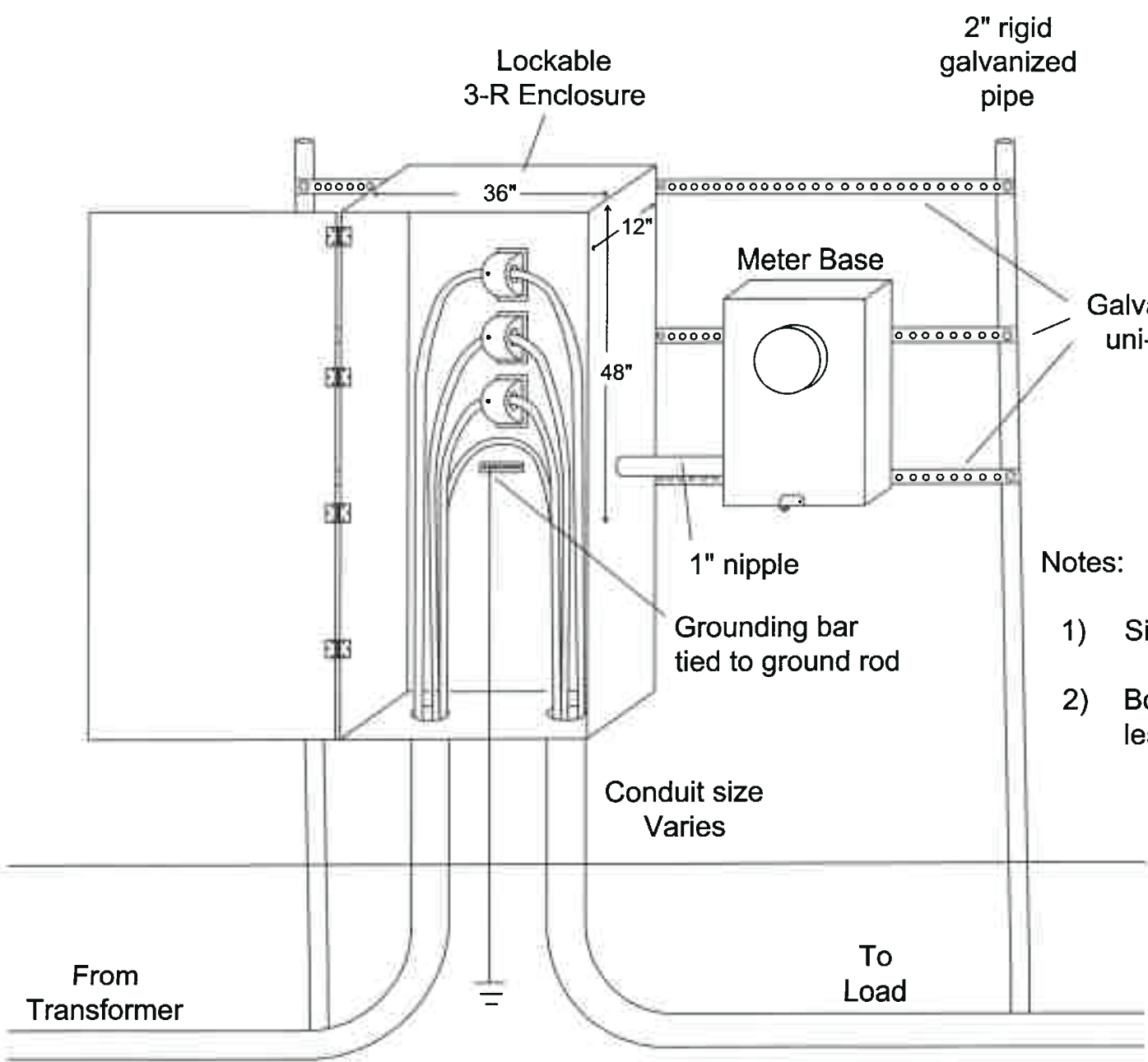
DATE: March 26, 1990
APPROVED BY: A. Bert Davis
REV: SHEET 1

MEMO # 8



All equipment and bonding jumpers, sized per NEC and local governing body

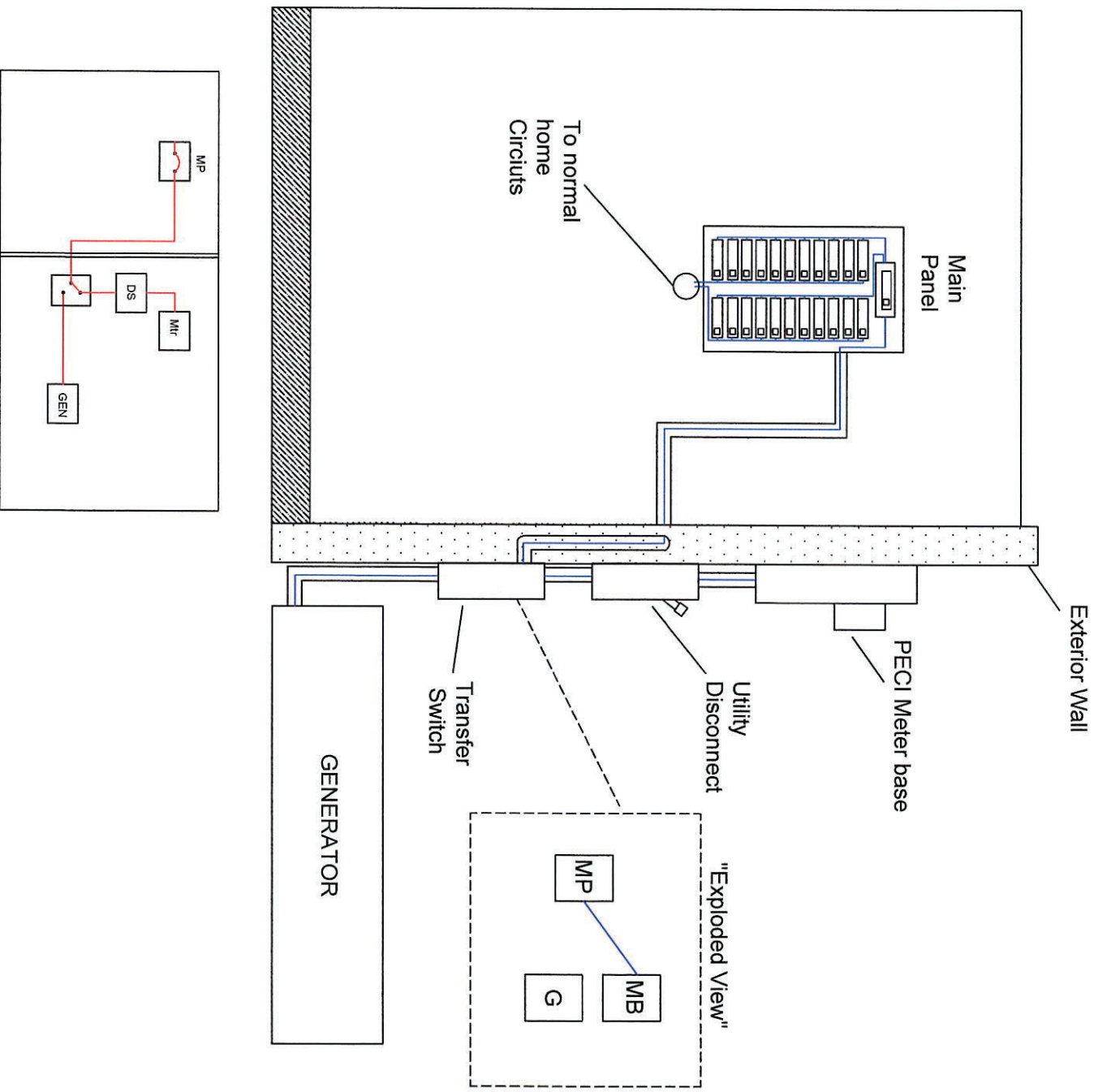
Tied to PECL ground - To PECL Transformer



Notes:

- 1) Sized by NEC and local governing body
- 2) Bonding wire to extend to PEI if structure is less than 6' from transformer.

GENERATOR HOME



NOTES

1. Transfer Switch to be "Double Pole/Double Throw"
2. Transfer Switch to be Mechanically designed to prevent connecting both. The "Utility Source" & "Generator" in parallel.
3. Transfer Switch must be "Break before Make" type.
4. The Jurisdiction- having authority must inspect and approve installation.
5. Installation must comply with all pertinent codes & ordinances
6. Outside Utility disconnect must be visible break, lockable, & located within 10' of meter

DATE: Jan. 24, 2019

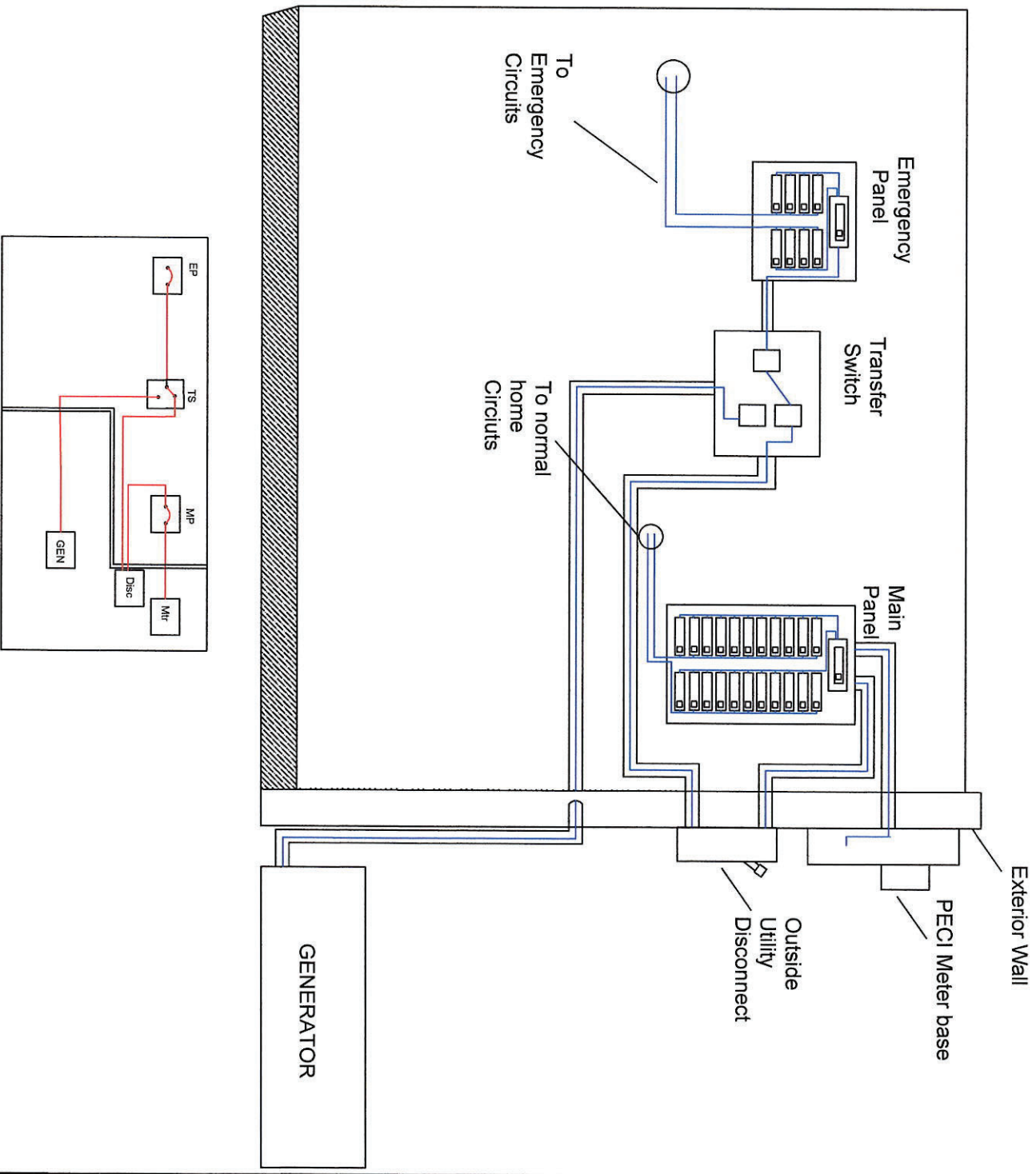
APPROVED BY: Wilson D. Saleeby

REV: Feb. 16, 2021 SHEET 1 OF 2

MEMO #25

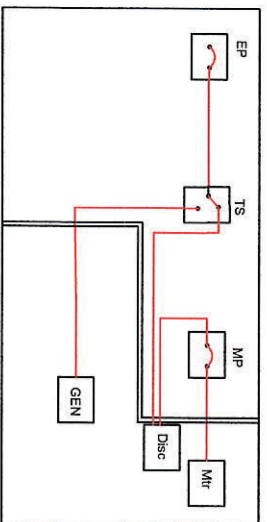


GENERATOR EMERGENCY PANEL



NOTES

1. Transfer Switch to be "Double Pole/Double Throw"
2. Transfer Switch to be Mechanically designed to prevent connecting both. The "Utility Source" & "Generator" in parallel.
3. Transfer Switch must be "Break before Make" type.
4. The Jurisdiction- having authority must inspect and approve installation.
5. Installation must comply with all pertinent codes & ordinances
6. Outside Utility disconnect must be visible break, lockable, & located within 10" of meter



320 AMP SINGLE PHASE RESIDENTIAL / COMMERCIAL SERVICE

CONT. AMP RATING	SERVICE	CONNECTOR TYPE	W	DIMENSIONS (IN) H	D	HUB	NO. OF TERMINALS	BY PASS	ENCLOSURE MATERIAL
320	OH/UG	3/8" STUD	15	31	5.0	4" /Blank	4	LEVER BYPASS WITH JAW RELEASE	GAL. STEEL
Durham	T-H4330		15	36.625	5.6875				
Talon (Landis+Gyr)	48104-02RG		16	31	5.0				
Milbank	U2448-X		17.75	34.125	6.5				
Milbank	U5059-X-2/200-K3L		15	42.44	4.84				
GE	TSDR830CFCUGP		30.72	33.11	6.49				
GE	TSDR840CFCUGP		30.72	33.11	6.49				
Midwest	(UG) RS45508C		31	33	6.125	NA			
RONK	MSB320LC		20.375	43.375	5.563				

200 AMP POLYPHASE 120-208 volts RESIDENTIAL / COMMERCIAL SERVICE

CONT. AMP RATING	SERVICE	CONNECTOR TYPE	W	DIMENSIONS (IN) H	D	HUB	NO. OF TERMINALS	BY PASS	ENCLOSURE MATERIAL
200	OH/UG	3/8" STUD	13	19	4.8	3" / Blank	7	LEVER BYPASS WITH JAW RELEASE	GAL. STEEL
Durham	T-H7230		16	27	5.625				
Talon (Landis+Gyr)	42507-025		13	19	5.2				
Milbank	U9761-RRL		13	28.25	4.875				
Milbank	U4701-RXL		13	19	4.844				

320 AMP POLYPHASE RESIDENTIAL / COMMERCIAL SERVICE

CONT. AMP RATING	SERVICE	CONNECTOR TYPE	W	DIMENSIONS (IN) H	D	HUB	NO. OF TERMINALS	BY PASS	ENCLOSURE MATERIAL
320	OH/UG	3/8" STUD	19	34	6	4" /Blank	4	LEVER BYPASS WITH JAW RELEASE	GAL. STEEL
Durham	T-H7330		20	39.875	6.5				
Landis+Gyr	48707-02		20	34	6				
Milbank	U2594-X		19	34.125	6.5				

200 AMP POLYPHASE **480 volts** COMMERCIAL SERVICE Disconnect on Source-Side of Meter Base

CONT. AMP RATING	SERVICE	CONNECTOR TYPE	W	DIMENSIONS (IN) H	D	HUB	NO. OF TERMINALS	BY PASS	ENCLOSURE MATERIAL
200	OH/UG	3/8" STUD	13	19	4.8	3" / Blank	7	LEVER BYPASS WITH JAW RELEASE	GAL. STEEL
Durham	1007371		13.5	35	5.75				